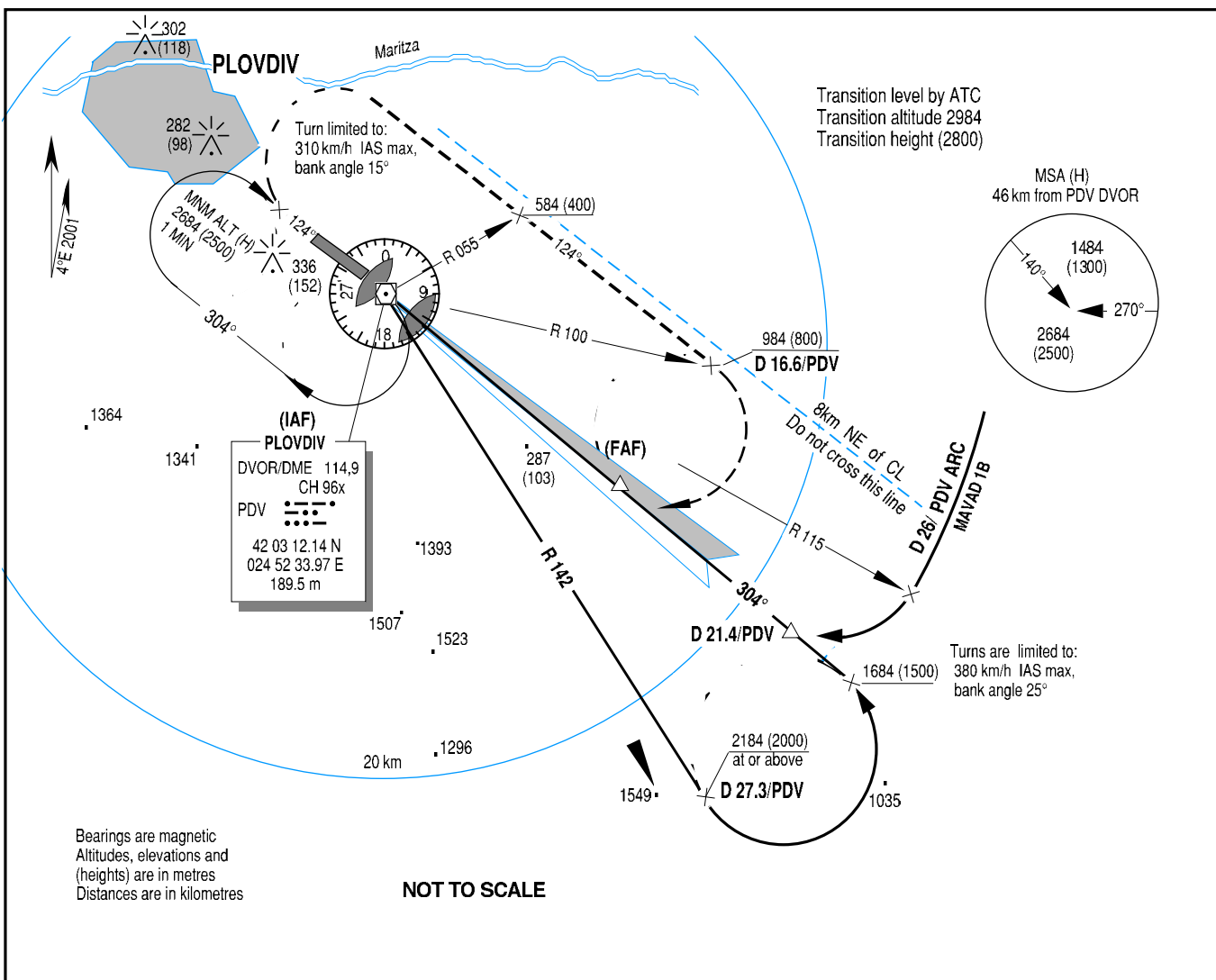


**INSTRUMENT
APPROACH
CHART - ICAO**

AERODROME ELEV 184 m
HEIGHTS RELATED TO
THR RWY 30 - ELEV 184 m

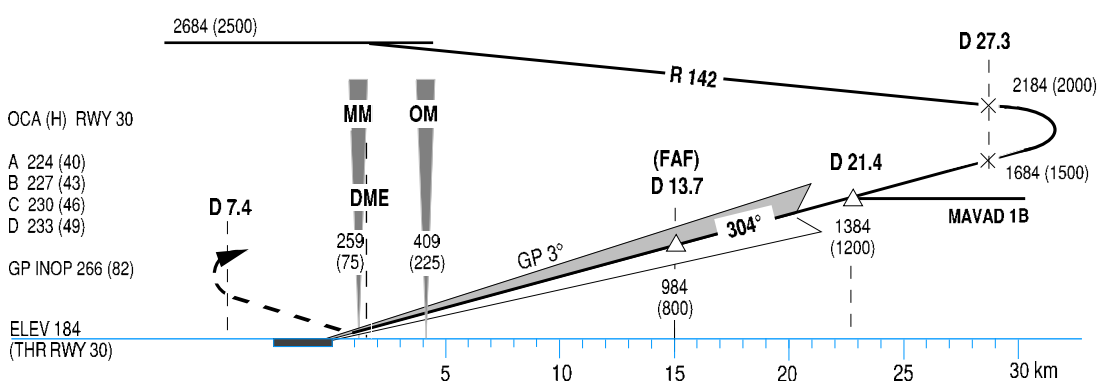
TWR	133.600
125.500	
121.500	

**PLOVDIV
ILS/DME
RWY 30**



Bearings are magnetic
Altitudes, elevations and
(heights) are in metres
Distances are in kilometres

NOT TO SCALE



MISSED APPROACH: Climb on RWY heading. At D 7.4/PDV turn RIGHT on track 124°, climb to maintain 584 (400) m. When crossing R 055/PDV leave 584 (400) m for 984 (800) m. When crossing R 100/PDV (D 16.6/PDV) turn RIGHT for another approach.

CEILING AND VISIBILITY MINIMA		Distance DME PDV		10	8	6				
TAKE OFF	See LBDP AD 2 - 15	Altitude (height)		789(605)	689 (505)	584 (400)				
LANDING	See LBDP AD 2 - 13	GS		km/h	100	150	200	250	300	350
		Rate of descent		m/s	1,4	2,2	2,9	3,6	4,3	5,1